



# Loudon County Planning Department

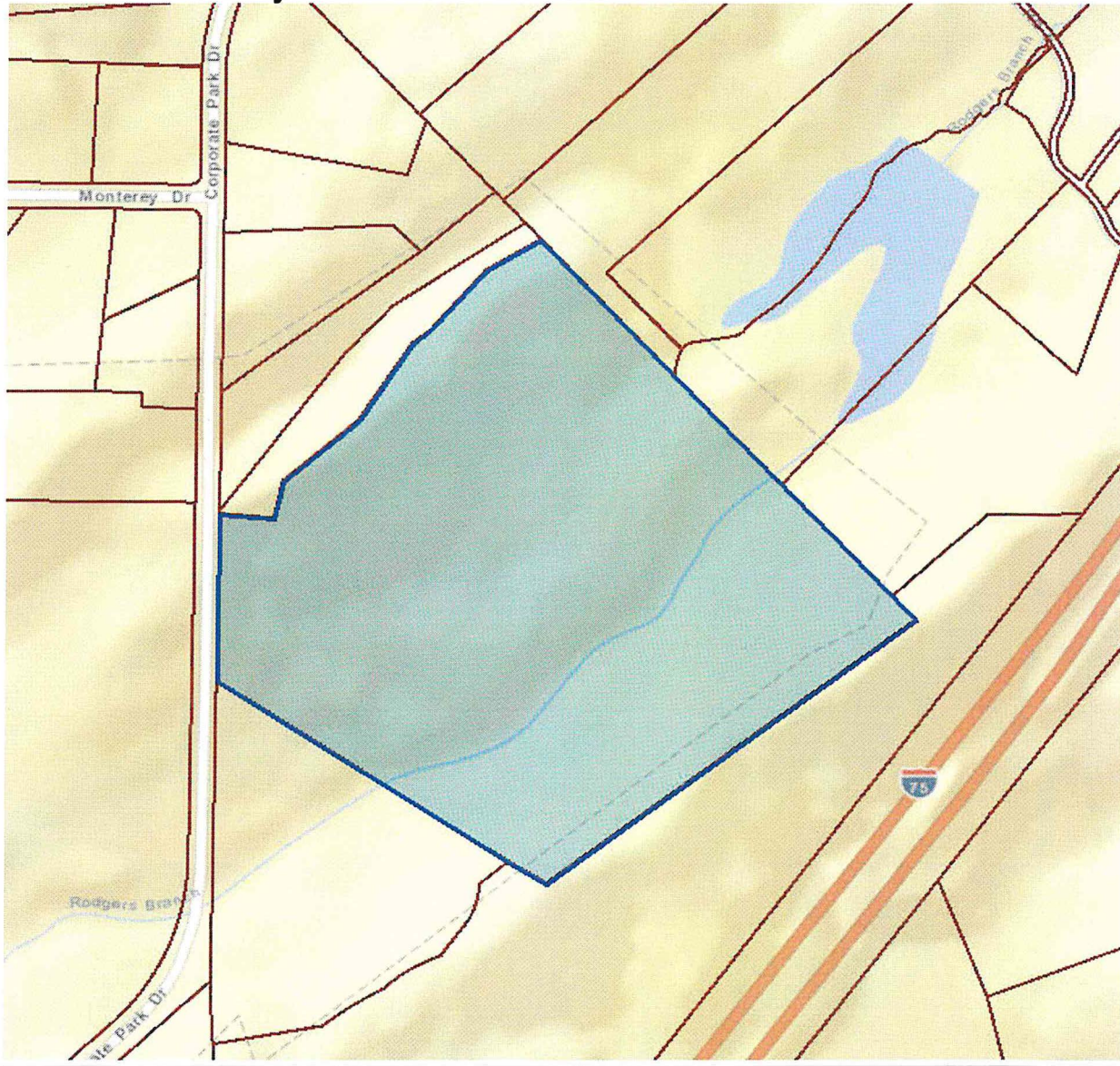
101 Mulberry Street, Suite 101  
Loudon, Tennessee 37774  
Office: 865-458-2055  
Fax: 865-458-3598  
[www.loudoncounty-tn.gov](http://www.loudoncounty-tn.gov)

AGENDA  
LOUDON REGIONAL PLANNING COMMISSION  
LOUDON CITY HALL  
WEDNESDAY, MARCH 7, 2018  
12:30 P.M.

1. Call To Order
2. Pledge of Allegiance and Roll Call
3. Approval of Minutes of the February 7, 2018 meeting.
4. New Business
  - A. Site Plan, parking expansion, Morgan Olson, 9600 Corporate Park Dr., Tax Map 040, Parcel 2.0, M-1, Light Industrial District;
  - A. Discuss and review Loudon Zoning Ordinance
5. Additional Public Comments
6. Announcements and/or Comments from the Board/Commission
7. Adjournment

## Item A

Loudon County - Parcel: 040 002.00



County: Loudon  
Owner: INDUSTRIAL DEVBOARD  
Address: CORPORATE PARK DR 9600  
Parcel Number: 040 002.00  
Deeded Acreage: 108.62  
Calculated Acreage: 0  
Date of Imagery: 2015





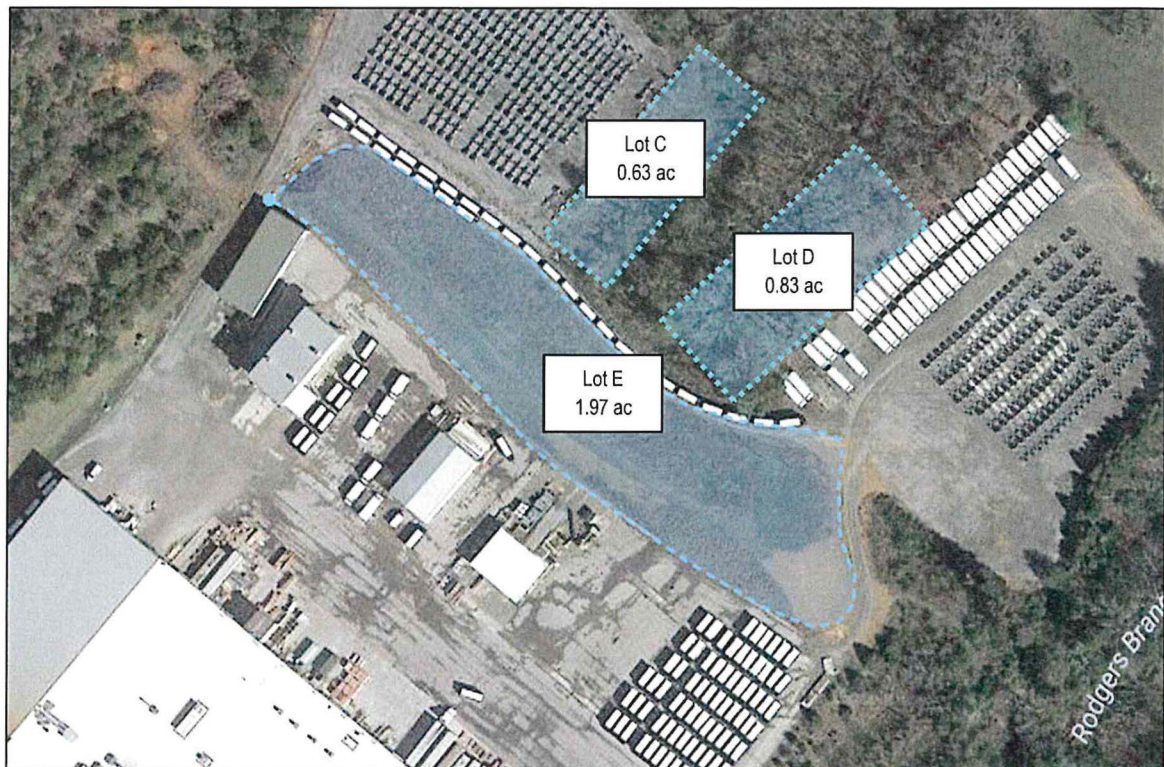




### Lot E – New Addition



### Total Overview















# Loudon County Planning Department

101 Mulberry Street, Suite 101  
Loudon, Tennessee 37774  
Office: 865-458-2055  
Fax: 865-458-3598  
[www.loudoncounty-tn.gov](http://www.loudoncounty-tn.gov)

AGENDA  
LOUDON BOARD OF ZONING APPEALS  
LOUDON CITY HALL  
WEDNESDAY, MARCH 7, 2018  
*Immediately following the Planning Commission meeting*

1. Call to Order
2. Roll Call and Approval of Minutes from the February 7, 2018 meeting
3. Planned Agenda Items
  - A. No agenda items.
4. Additional public comments
5. Announcements and/or comments from Board/Commission
6. Adjournment