

Loudon County Planning Department

101 Mulberry Street, Suite 101
Loudon, Tennessee 37774
Office: 865-458-2055
Fax: 865-458-3598
www.loudoncounty-tn.gov

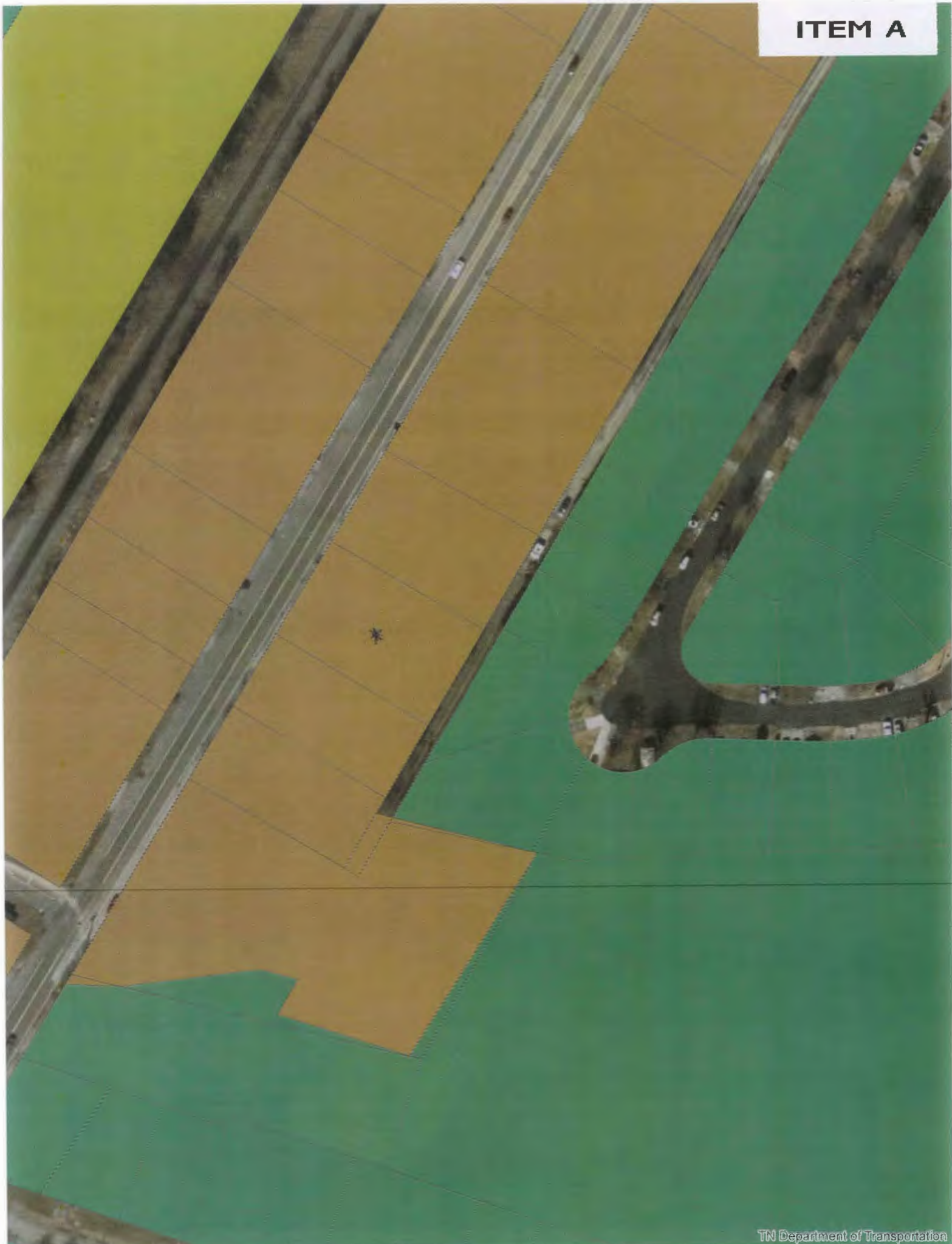
AGENDA
LOUDON REGIONAL PLANNING COMMISSION
LOUDON CITY HALL
WEDNESDAY, JUNE 7, 2017
12:30 P.M.

1. Call To Order
2. Pledge of Allegiance
3. Roll Call
4. Approval of Minutes for April 5, 2017 (May meeting cancelled) meeting
5. New Business
 - A. Rezoning request, Linda Cruz, from C-2, Highway Business District to R-2, High Density Residential District, 931 Mulberry Street, Tax map 041I, Group A, Parcel 005.00;
 - B. Site plan, expansion of Malibu Boats parking, David Bryant, Kimberly Way, Tax Map 033, Parcel 007.00;
6. Additional Public Comments
7. Announcements and/or Comments from the Board/Commission

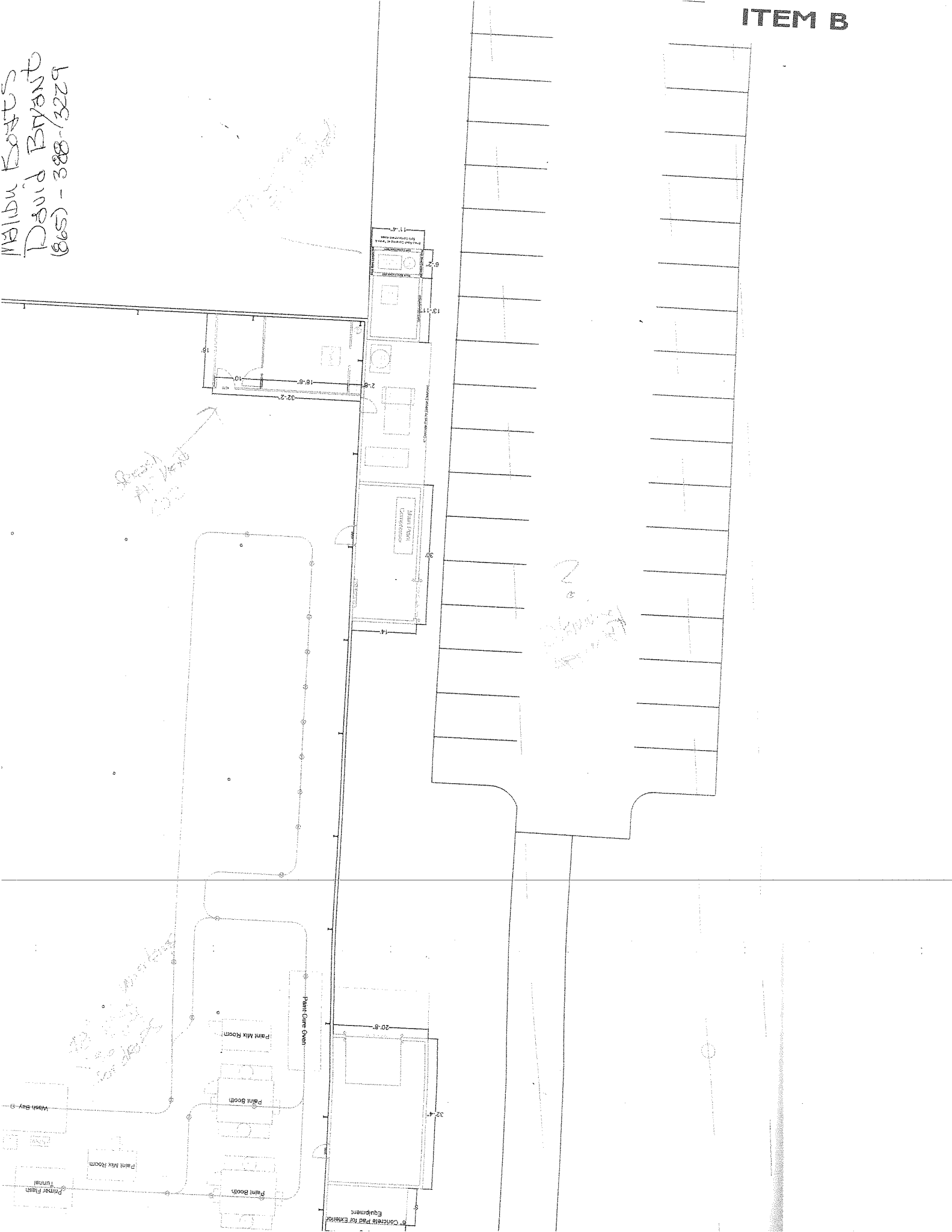
8. Adjournment

Loudon County - Parcel: 0411 A 005.00





Malibu Boats
David Bryant
(865) - 388-3229

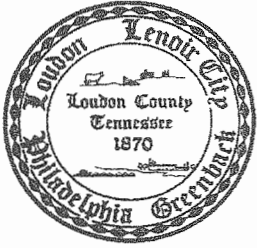


Special Air Vent

20' Material Storage

100' Material Storage

Concrete Pad for Exterior Equipment



Loudon County Planning Department

101 Mulberry Street, Suite 101
Loudon, Tennessee 37774
Office: 865-458-2055
Fax: 865-458-3598
www.loudoncounty-tn.gov

AGENDA
LOUDON BOARD OF ZONING APPEALS
LOUDON CITY HALL
WEDNESDAY, JUNE 7, 2017
Immediately following the Planning Commission meeting

1. Call to Order
2. Roll Call and Approval of Minutes from the May 3, 2017 meeting
3. Planned Agenda Items
 - A. Variance Request, 7' side-yard setback, applicants Russell Campbell and Dee Pedigo, 607 Quiet River Lane, Tax Map 040D, Group D, Parcel 010.00, R-S-1, Single Family Residential District;
4. Additional public comments
5. Announcements and/or comments from Board/Commission
6. Adjournment

COPY

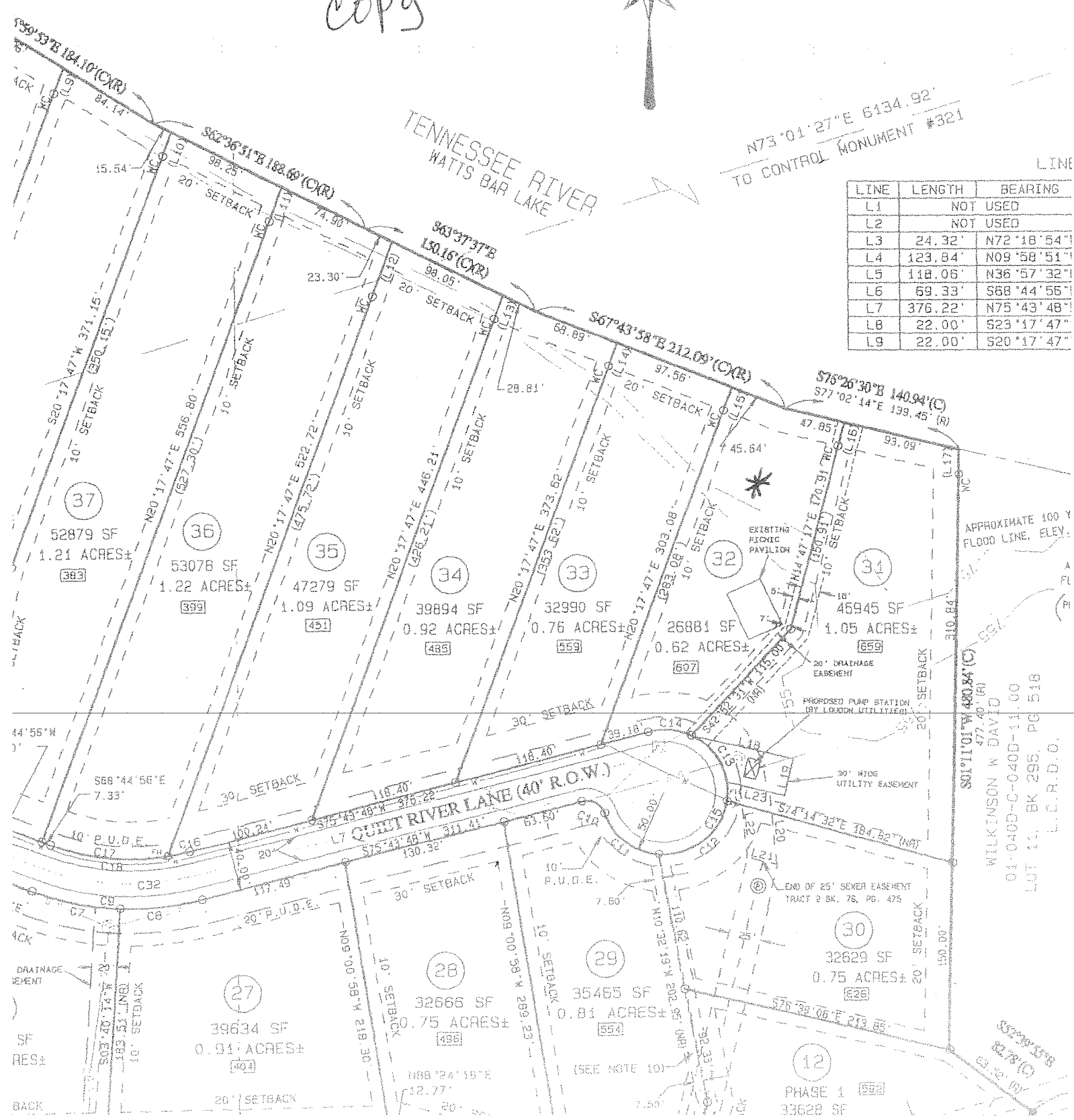


TENNESSEE RIVER
WATTS BAR LAKE

N73°01'27"E 6134.92'
TO CONTROL MONUMENT #321

LINE

LINE	LENGTH	BEARING
L1		NOT USED
L2		NOT USED
L3	24.32'	N72°18'54"
L4	123.84'	N09°58'51"
L5	118.06'	N36°57'32"
L6	69.33'	S68°44'55"
L7	376.22'	N75°43'48"
L8	22.00'	S23°17'47"
L9	22.00'	S20°17'47"



APPROXIMATE 100 Y
FLOOD LINE, ELEV.:

WILKINSON W DAVID
01-040D-C-040D-11.00
LOT 11, BK 295, PG 516
L.C.R.D.O.

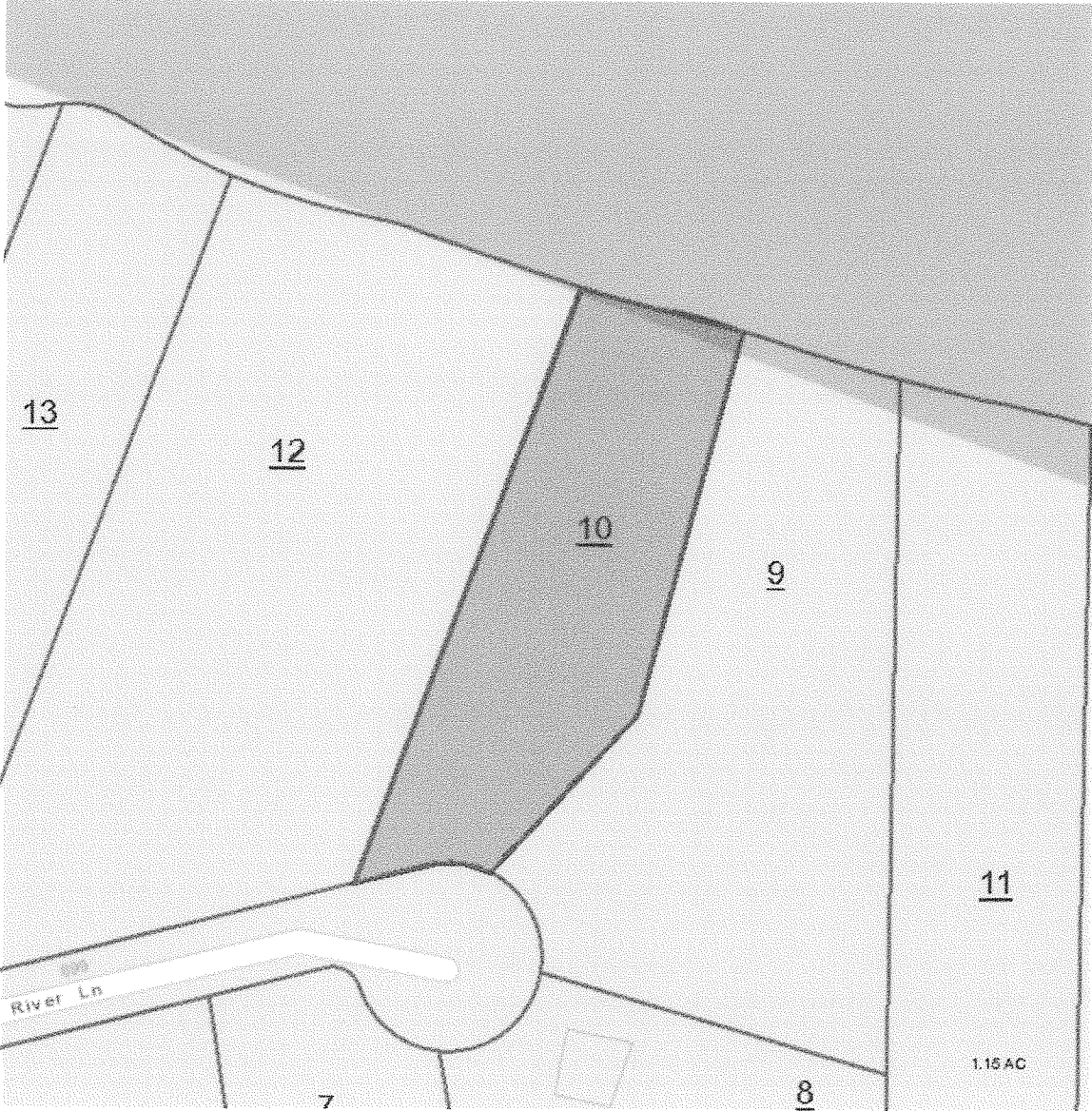
PHASE 1
33628 SF

RES±

(SEE NOTE 10)

END OF 25' SEWER EASEMENT
TRACT 2 BK. 76, PG. 475

Loudon County - Parcel: 040D D 010.00



Loudon County - Parcel: 040D D 010.00

