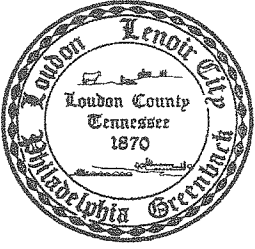


# Loudon County Planning Department

101 Mulberry Street, Suite 101  
Loudon, Tennessee 37774  
Office: 865-458-2055  
Fax: 865-458-3598  
[www.loudoncounty-tn.gov](http://www.loudoncounty-tn.gov)

AGENDA  
LOUDON REGIONAL PLANNING COMMISSION  
LOUDON CITY HALL  
WEDNESDAY, MAY 3, 2017

The Wednesday, May 3, 2017 regular meeting of the Loudon Regional Planning Commission is cancelled due to a lack of agenda items.



# Loudon County Planning Department

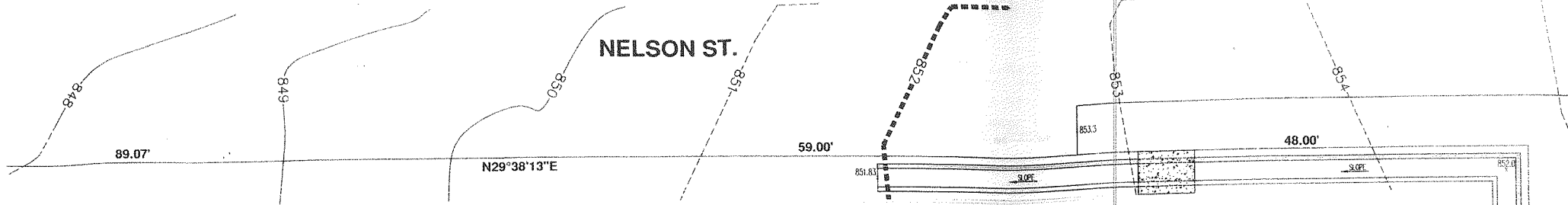
101 Mulberry Street, Suite 101  
Loudon, Tennessee 37774  
Office: 865-458-2055  
Fax: 865-458-3598  
[www.loudoncounty-tn.gov](http://www.loudoncounty-tn.gov)

AGENDA  
LOUDON BOARD OF ZONING APPEALS  
LOUDON CITY HALL  
WEDNESDAY, MAY 3, 2017  
12:30 P.M.

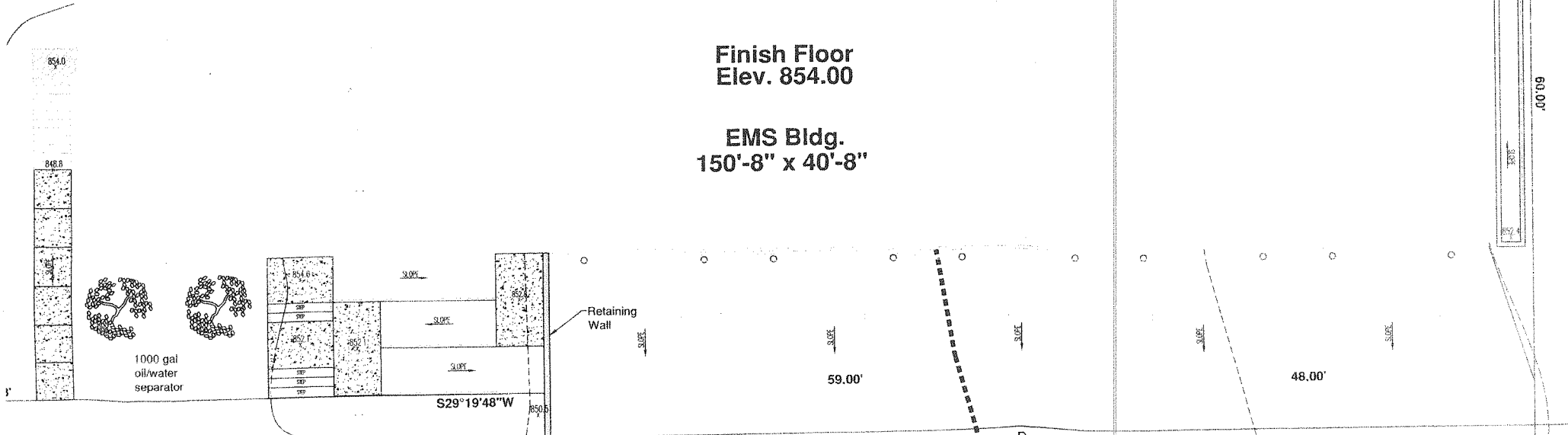
1. Call to Order
  2. Roll Call and Approval of Minutes from the April 5, 2017 meeting
  3. Planned Agenda Items
    - A. Variance Request for flood elevation of City of Philadelphia Emergency Services Building, Church Street, Tax Map 055M Group E, Parcels 13, 14, and 15, C-1, Commercial District;  
  
*site plan approved at 6/3/15 Planning Commission Meeting*  
[http://planningandcodes.loudoncounty-tn.gov/documents/meetings/LoudonCity/2015/20150603\\_LORPCBZA\\_Minutes.pdf](http://planningandcodes.loudoncounty-tn.gov/documents/meetings/LoudonCity/2015/20150603_LORPCBZA_Minutes.pdf)
  4. Additional public comments
  5. Announcements and/or comments from Board/Commission
  6. Adjournment
-



NELSON ST.



Finish Floor  
Elev. 854.00  
  
EMS Bldg.  
150'-8" x 40'-8"



Pour 8" concrete drive reinforced  
w/6x6 10x10 W.W.M. on gravel fill.  
Slope to existing asphalt.